

DNR



DANIEL NEWMAN RACING

Daniel Newman Racing Ambient Lighting Profile Installation Guide

Version 1.0.0 - Date of publication: 31/01/2026- Date of revision: 31/01/2026

Copyright © 2026 Daniel Newman Racing

Summary

Introduction 3

Support 3

FAQs 3

Ambient Lighting Profile Installation 4



Introduction

Daniel Newman Racing is where cutting-edge technology meets the thrill of racing. We create advanced SimHub-compatible LED profiles and Dashboards to enhance your Sim Racing performance. Whether you're a new rookie or pro driver, our products are designed to immerse you in the action. Trusted and used by serious racers, including real life Formula 1 and IndyCar champions, DNR profiles are built to give you the edge when it matters most.

This instruction document will explain the installation process of the DNR Ambient Lighting profiles.

Daniel Newman Racing utilises regular new features and functions from within SimHub and so you will need to ensure you have the latest version of SimHub installed at all times. Please ensure before you begin installation that the latest version is running on your system.

You can download SimHub here - <https://www.simhubdash.com>

Support

For any further issues and troubleshooting you can contact Daniel Newman Racing via the website (<https://www.danielnewmanracing.com>) or via email at support@danielnewmanracing.com

Alternatively you could join our excellent Discord Community, where somebody will be able to assist you: <https://discord.gg/danielnewmanracing>

Daniel Newman Racing offers several SimHub LED profiles and Dashboards for FREE download. In addition to the free content, we provide an expanding library of detailed and exciting, Member-Exclusive SimHub profiles and customisations for a wide range of devices. You can find more information about membership here: <https://danielnewmanracing.com/membership>

FAQ

How do I activate the SimHub Plugin?

The Daniel Newman Racing SimHub plugin requires activation to unlock all membership features. In order to activate it, navigate to the homepage of the Plugin, press 'Login with Account' and then follow the account login prompts on the Daniel Newman Racing. You will need an account at either the FREE level, or at one of our 3 paid membership tiers.

How do I update the SimHub Plugin?

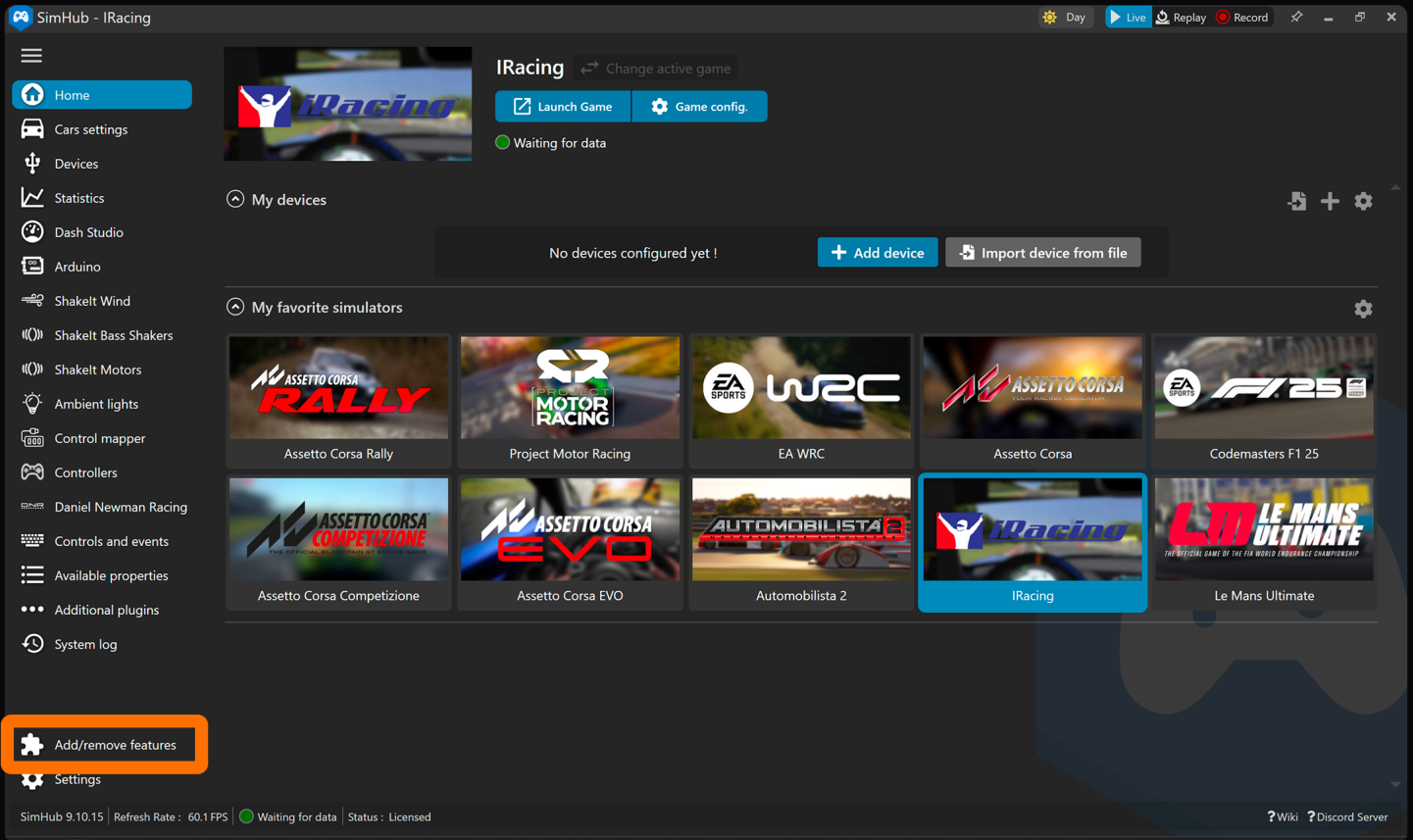
The Daniel Newman Racing SimHub plugin has an auto update function built into it. This means when an update is available, you simply need to press update and let SimHub and the plugin automatically download, close the application, install and reopen, all by itself. No manual intervention required. When updated the plugin will show an 'Up to date' label, along with a green tick.

Where do I get my login information?

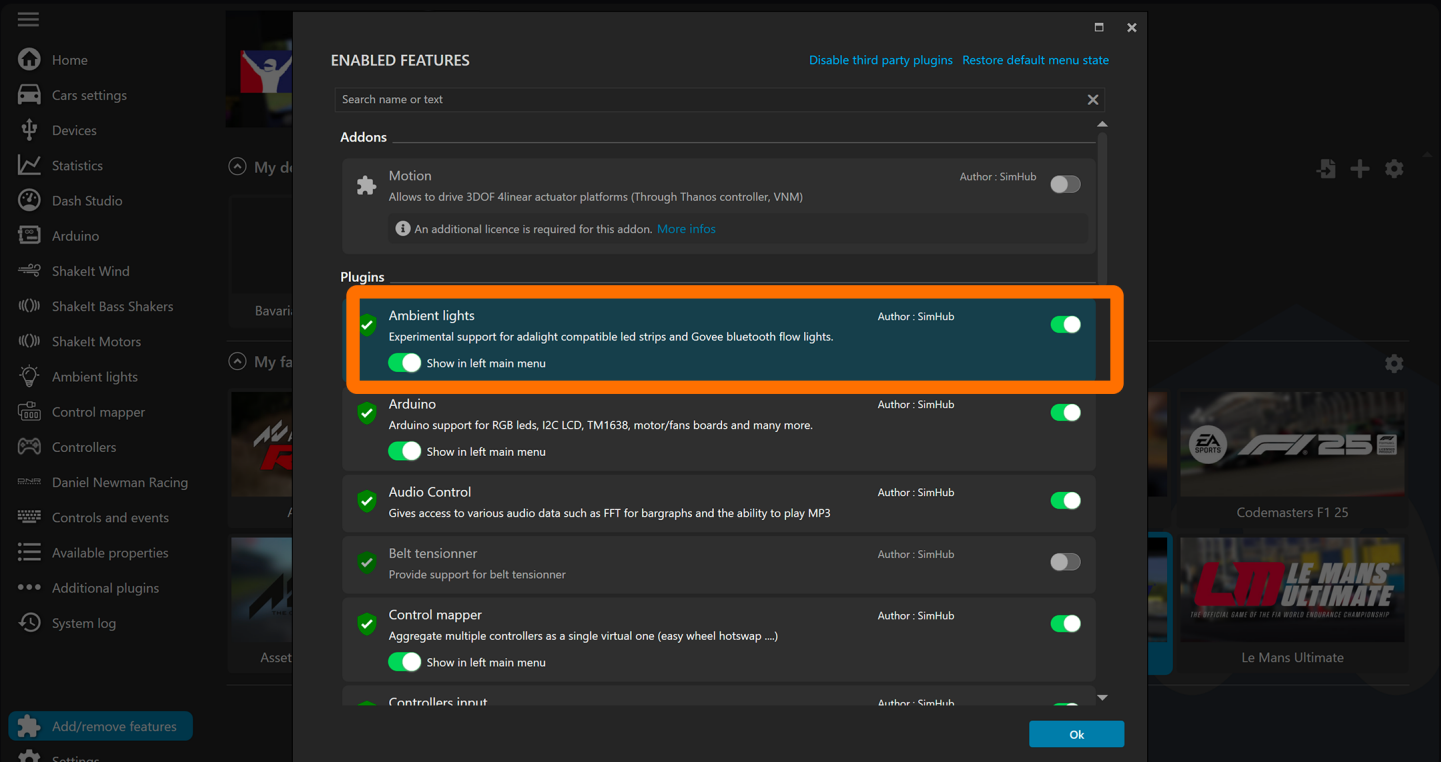
Once you become a Daniel Newman Racing member, your login information is binded to your account. You do not need to enter any codes for downloads or plugin authentication. Your account will become your password and for the duration of a valid membership, it will grant you access to the downloads at your subscription tier, and ensure your plugin remains valid and customisable for your products.

DNR Ambient Lighting Profile Installation - SimHub Device

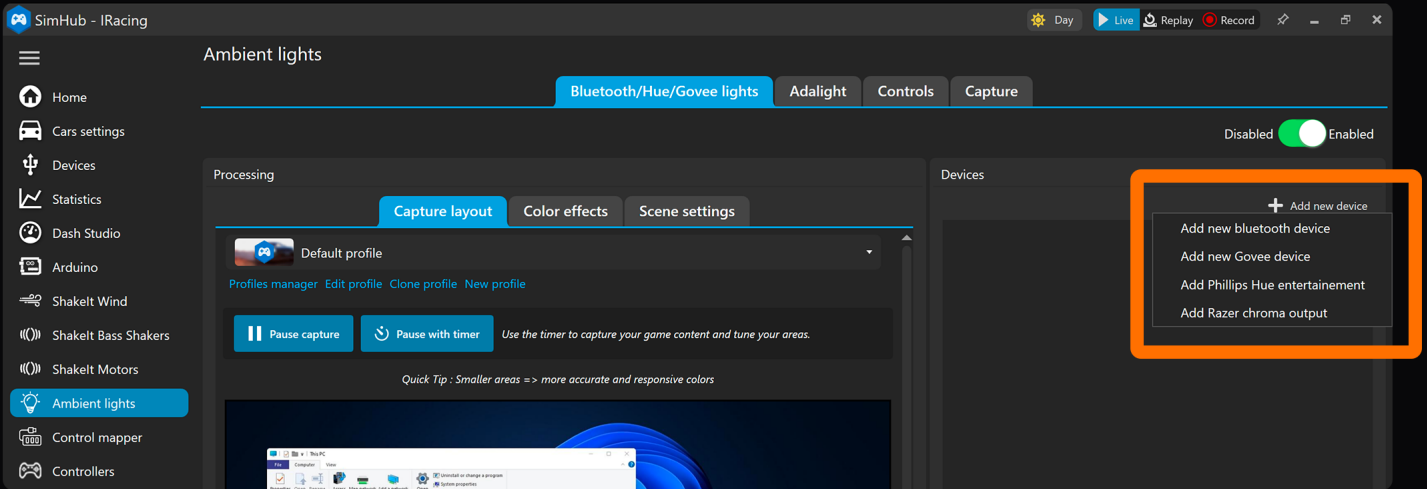
1 First you need to open SimHub and open the settings tab on the bottom left of the screen. From here you'll need to navigate to the 'Plug Ins' page.



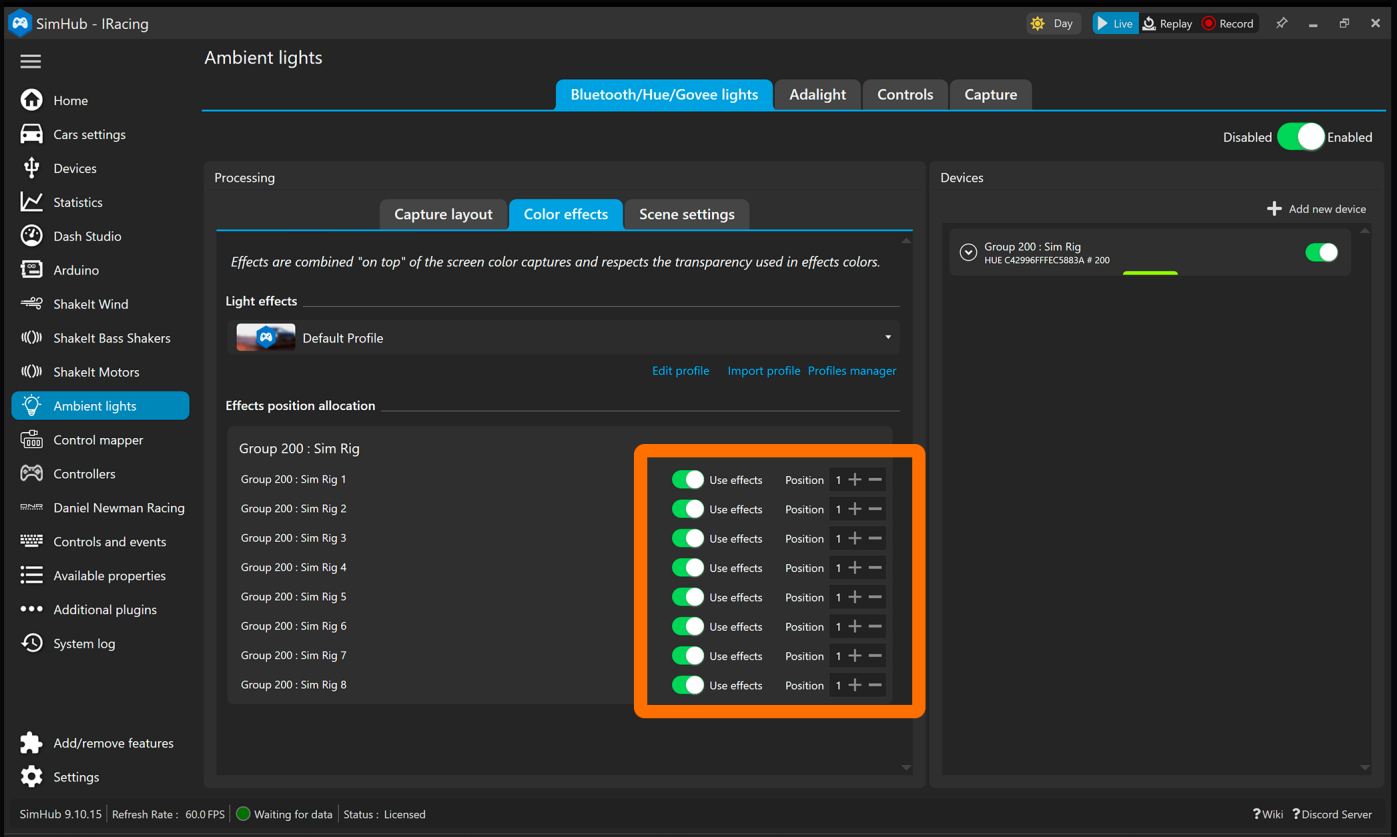
2 On the 'Add/Remove Features' page you'll need to locate the Ambient Light option and enable it. Once enabled it will appear as a tab on the left of your SimHub screen.



3 You will then need navigate to the Ambient Lights tab within SimHub and ensure your devices have been added, shown below. If the devices have not yet been added, you'll need to add them as per SimHubs instruction.



4 The device Installation process is managed by SimHub and is specific to the brand of hardware used. For Step 3, always follow SimHub guidance and instruction.

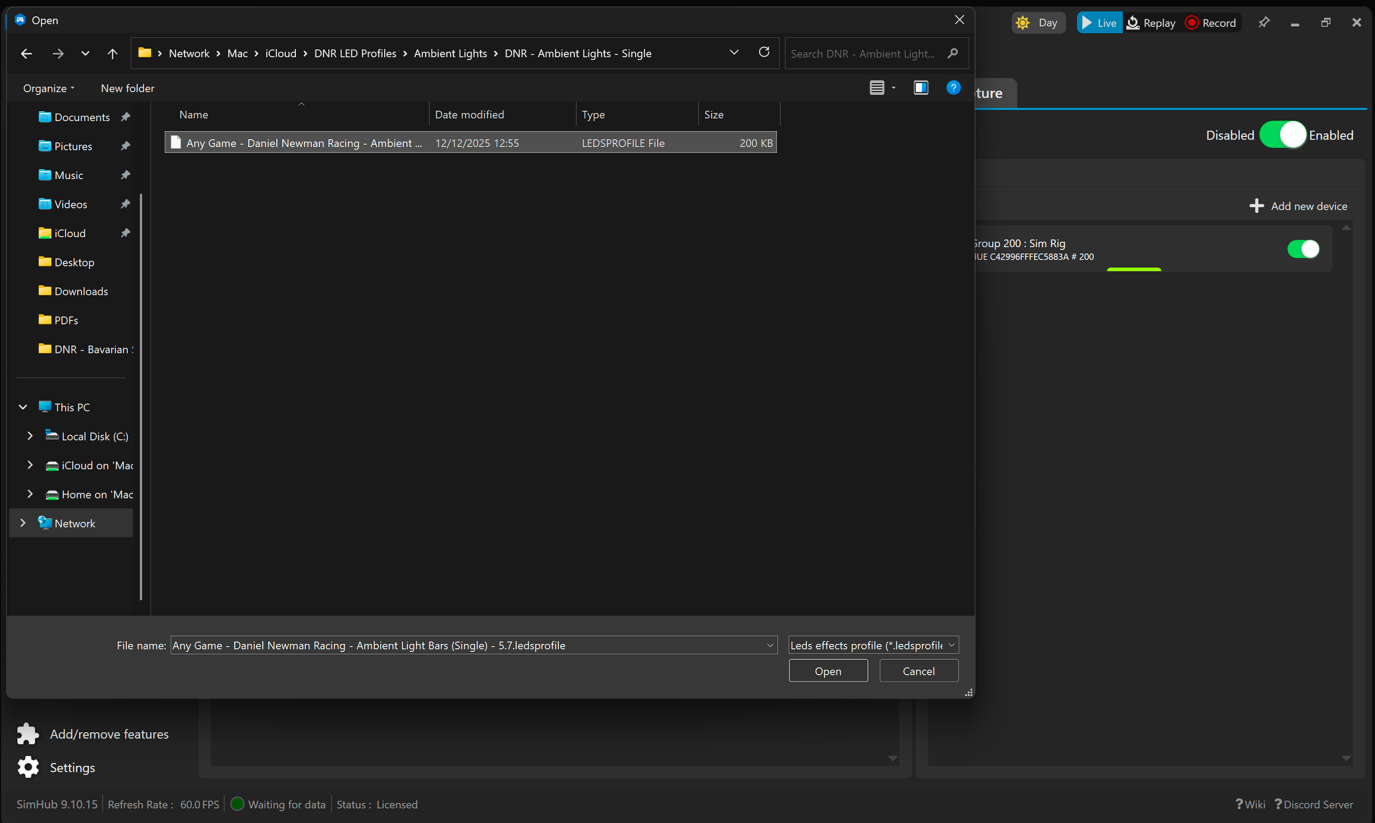


5 Once the Ambient devices have been successfully added to SimHub, following SimHubs own tutorial, ensure that in the 'Colour Effects' tab the 'Use Effects' tabs are all toggled **ON** (Green).

For Philips Hue lighting, each Ambient Light will show up as 1 group. For Govee Lighting, bars will often show up as 3 groups. Note that every 3 groups is 1 device.

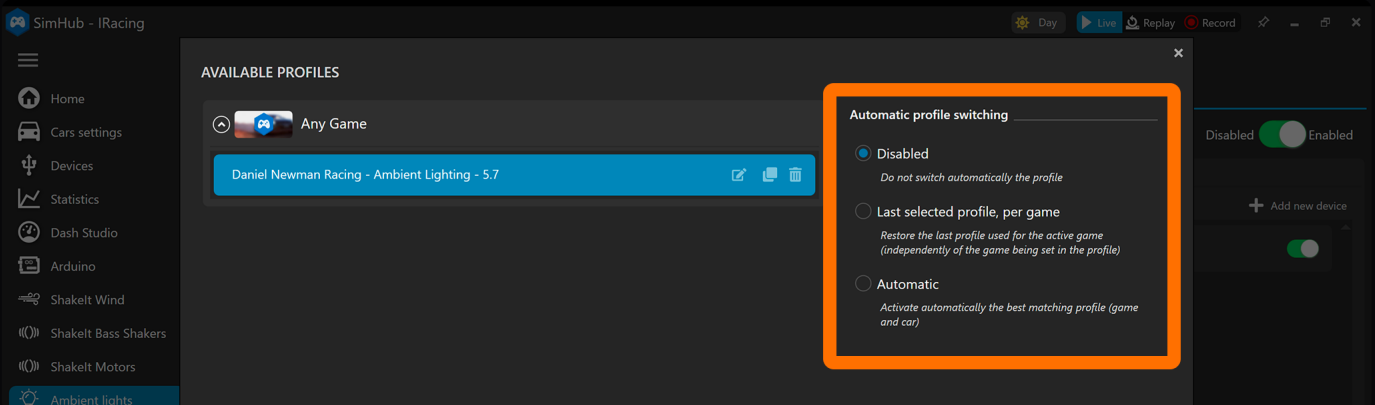
The lighting position must be set to 1 for ALL lights, as lighting position will be controlled via the DNR plugin.

6 Now to load the DNR Ambient Lighting profile, press the 'Import Profile' button and navigate your Computers disk drive to locate the LED file you wish to install. Once located select it and press 'Open'.



7 The LED profile is now successfully installed. We would strongly recommend at this stage that after you have selected the DNR LED that the disabled button on the right hand side of the screen is checked (this will ensure that SimHub does not switch the profile to any others installed when the game is launched).

if you do not require any other of the LED profiles (or the default profile) on this list, we would also recommend deleting them to ensure accidental switching does not occur.



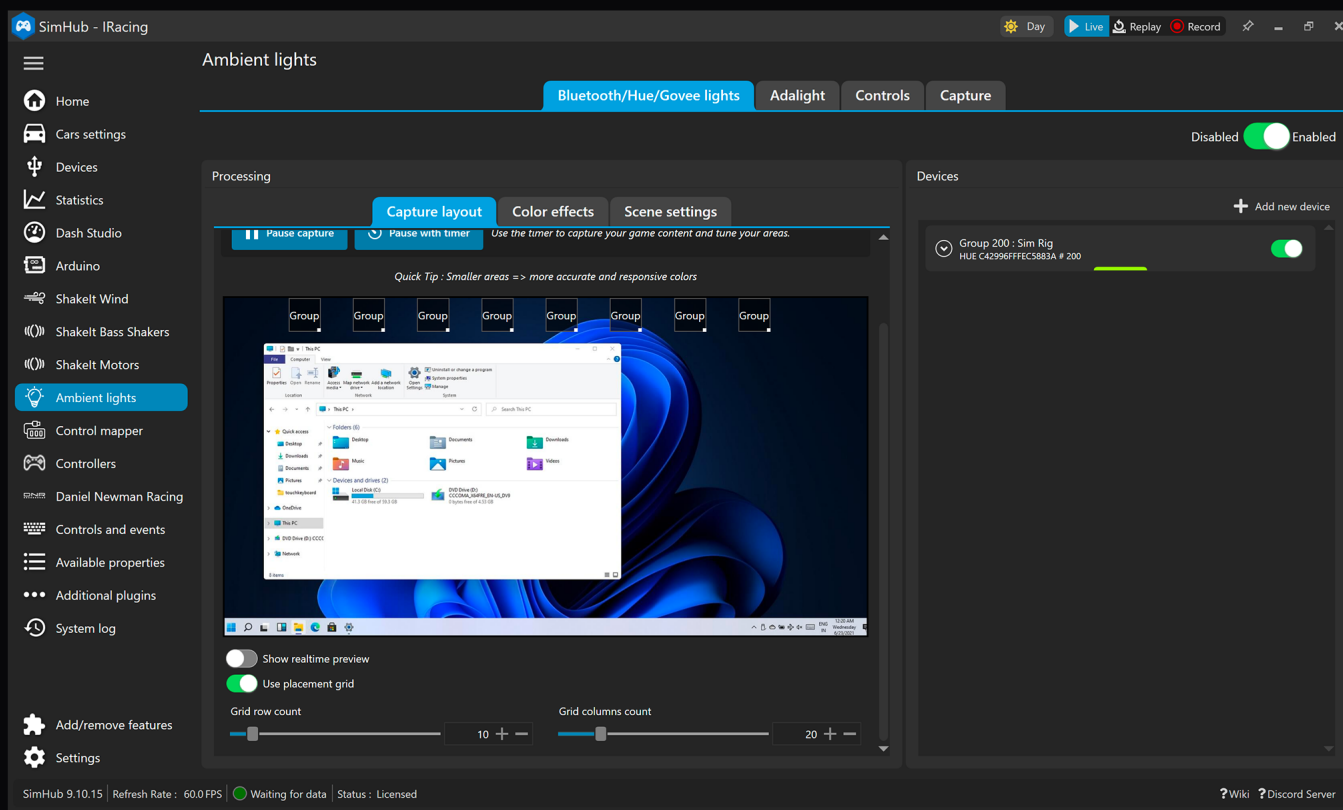
8 The Ambient Lighting Effects can now be controlled in the Daniel Newman Racing SimHub plugin where a range of capture and in game telemetry effects can be configured.

DNR Ambient Lighting - Capture Setup

- 1 The Daniel Newman Racing SimHub plugin allows your Ambient Lighting to behave in a number of ways, inclusive of Screen Capture effects (all with or without other in game telemetry effects over the top).

When selecting Ambient Capture in the Daniel Newman Racing plugin, your Ambient Lighting will mimic the colour shown on your captured PC monitor.

For example, if your capture box is over an area of monitor that passes a section of green grass, then the lights would illuminate green. Similarly if the capture area is over a section of blue sky, the lights would illuminate blue.



- 2 To setup your capture area we would advise the following:

- Tick the 'Show Realtime Preview' checkbox.
- Disable 'Use Placement Grid'
- Drag & resize your Ambient Lights on screen to small half inch squares (the smaller the capture box, the less data that is being crammed into it to process and the less colour it has to reproduce).
- Drag your Ambient Lights to areas of the Dashboard that pick up light in game (I.e for Left side lights, on the left A pillar, and for right side lights, the top of the Dashboard. This will create the best effects.

(Remember, if using Govee lights, you will have to drag all 3 groups per light to the same location.)