

DNR

DANIEL NEWMAN RACING

Daniel Newman Racing Button Box LED Profile Installation Guide

Summary

Introduction 3

Support 3

FAQs 3

Button Box Profile Installation (SimHub Device) 4

Button Box Profile Installation (Arduino Device) 9



Introduction

Daniel Newman Racing is where cutting-edge technology meets the thrill of racing. We create advanced SimHub-compatible LED profiles and Dashboards to enhance your Sim Racing performance. Whether you're a new rookie or pro driver, our products are designed to immerse you in the action. Trusted and used by serious racers, including real life Formula 1 and IndyCar champions, DNR profiles are built to give you the edge when it matters most.

This instruction document will explain the installation process of the DNR Button Box LED profiles.

Daniel Newman Racing utilises regular new features and functions from within SimHub and so you will need to ensure you have the latest version of SimHub installed at all times. Please ensure before you begin installation that the latest version is running on your system.

You can download SimHub here - <https://www.simhubdash.com>

Support

For any further issues and troubleshooting you can contact Daniel Newman Racing via the website (<https://www.danielnewmanracing.com>) or via email at support@danielnewmanracing.com

Alternatively you could join our excellent Discord Community, where somebody will be able to assist you: <https://discord.gg/danielnewmanracing>

Daniel Newman Racing offers several SimHub LED profiles and Dashboards for FREE download. In addition to the free content, we provide an expanding library of detailed and exciting, Member-Exclusive SimHub profiles and customisations for a wide range of devices. You can find more information about membership here: <https://danielnewmanracing.com/membership>

FAQ

How do I activate the SimHub Plugin?

The Daniel Newman Racing SimHub plugin requires activation to unlock all membership features. In order to activate it, navigate to the homepage of the Plugin, press 'Login with Account' and then follow the account login prompts on the Daniel Newman Racing. You will need an account at either the FREE level, or at one of our 3 paid membership tiers.

How do I update the SimHub Plugin?

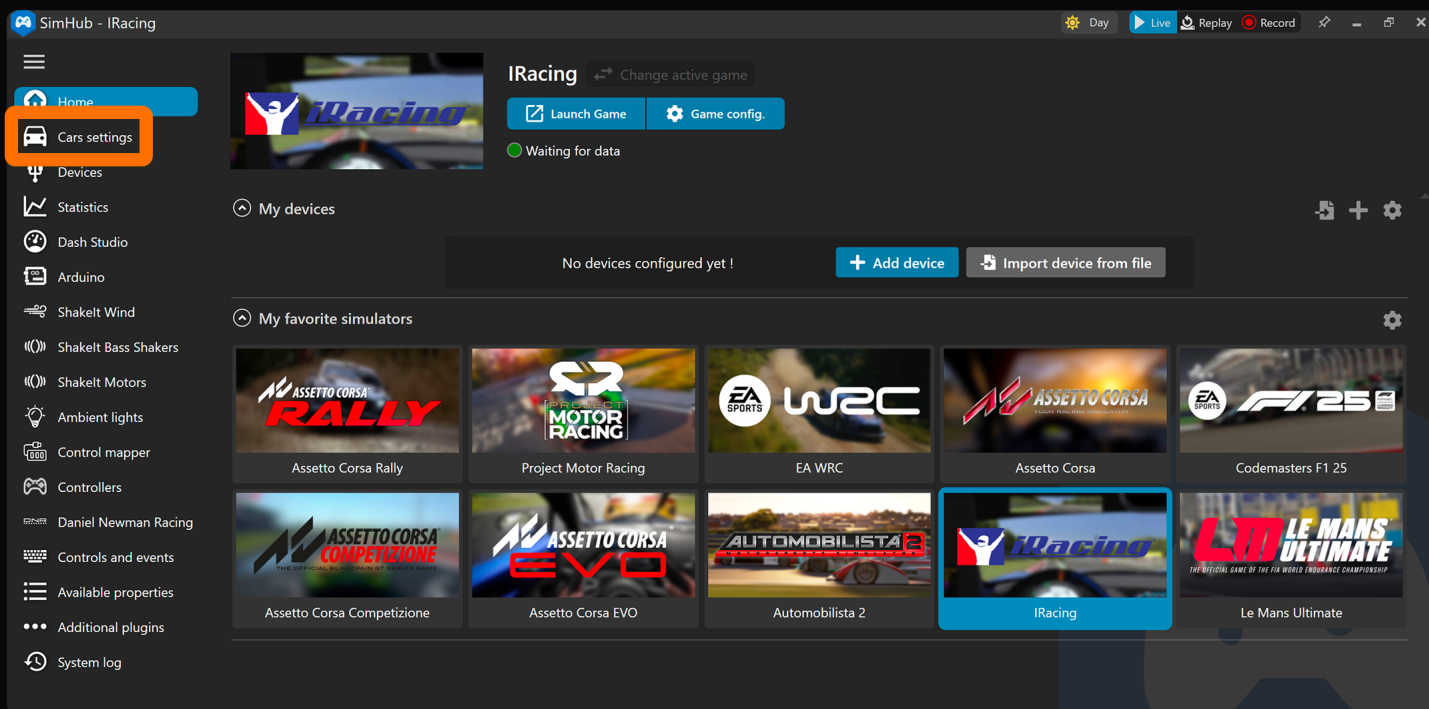
The Daniel Newman Racing SimHub plugin has an auto update function built into it. This means when an update is available, you simply need to press update and let SimHub and the plugin automatically download, close the application, install and reopen, all by itself. No manual intervention required. When updated the plugin will show an 'Up to date' label, along with a green tick.

Where do I get my login information?

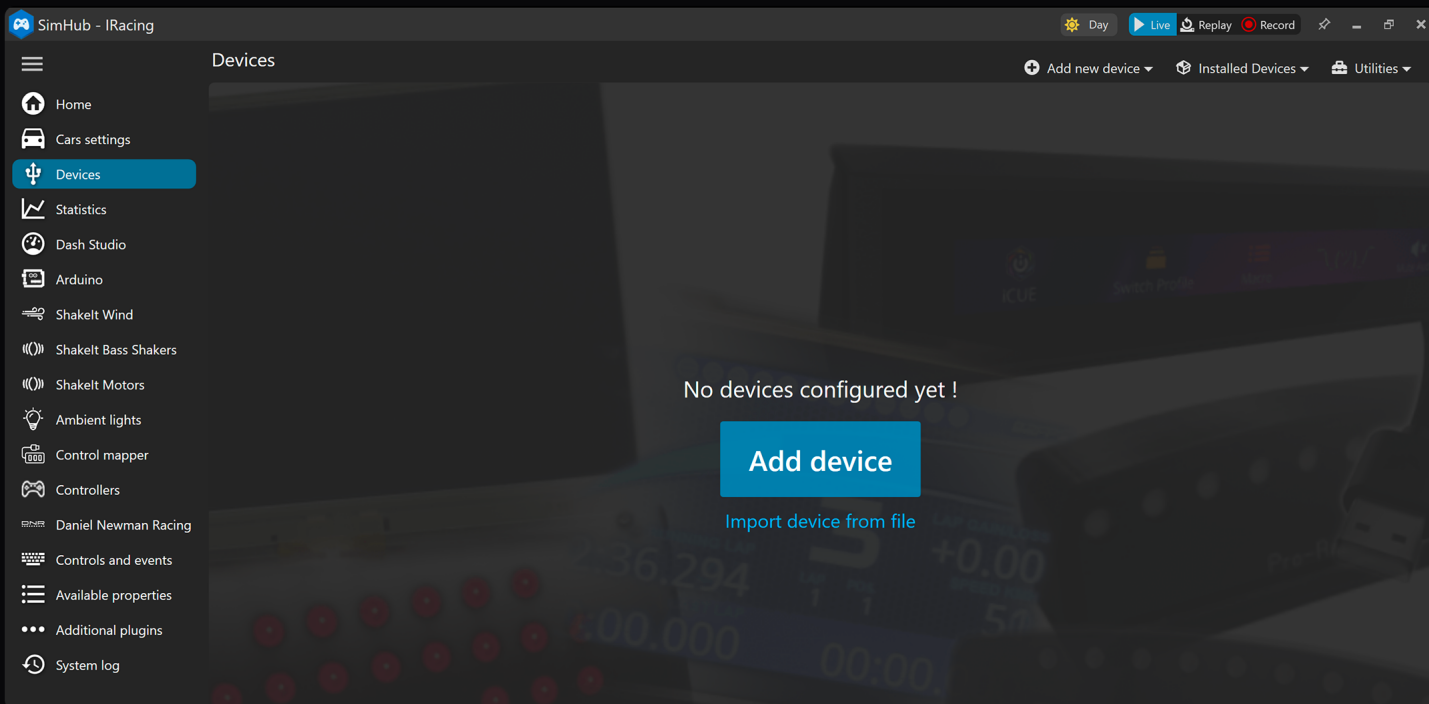
Once you become a Daniel Newman Racing member, your login information is binded to your account. You do not need to enter any codes for downloads or plugin authentication. Your account will become your password and for the duration of a valid membership, it will grant you access to the downloads at your subscription tier, and ensure your plugin remains valid and customisable for your products.

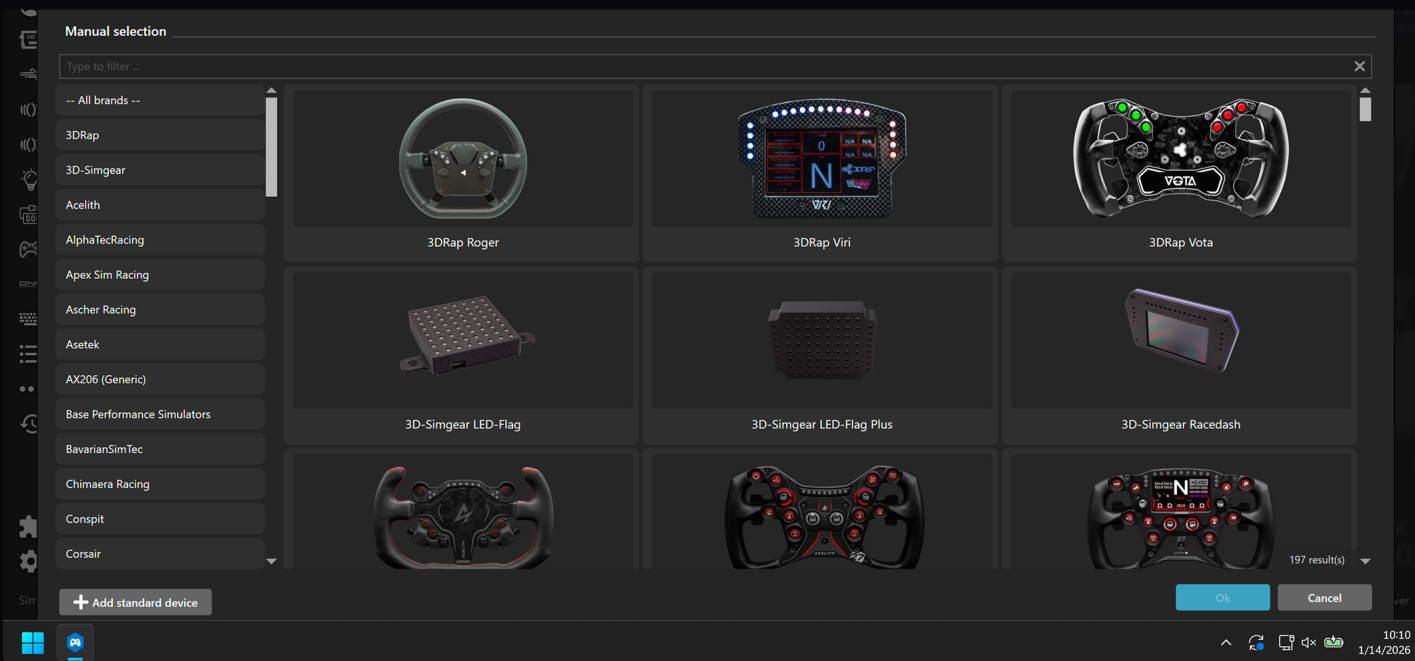
DNR Button Box LED Profile Installation - SimHub Device

- 1 First you need to open SimHub and navigate to the Devices page. If you are adding an LED profile to a non SimHub recognised device (i.e an Arduino DIY type device you can skip to page 9. SimHub does not list all manufacturers as supported devices, so be sure to check which option you need.



- 2 If your SimHub Compatible device is not yet configured, you will need to press 'Add Device' on the devices page, and then scroll the list of compatible devices until you find the one you are looking for, and press 'OK'.

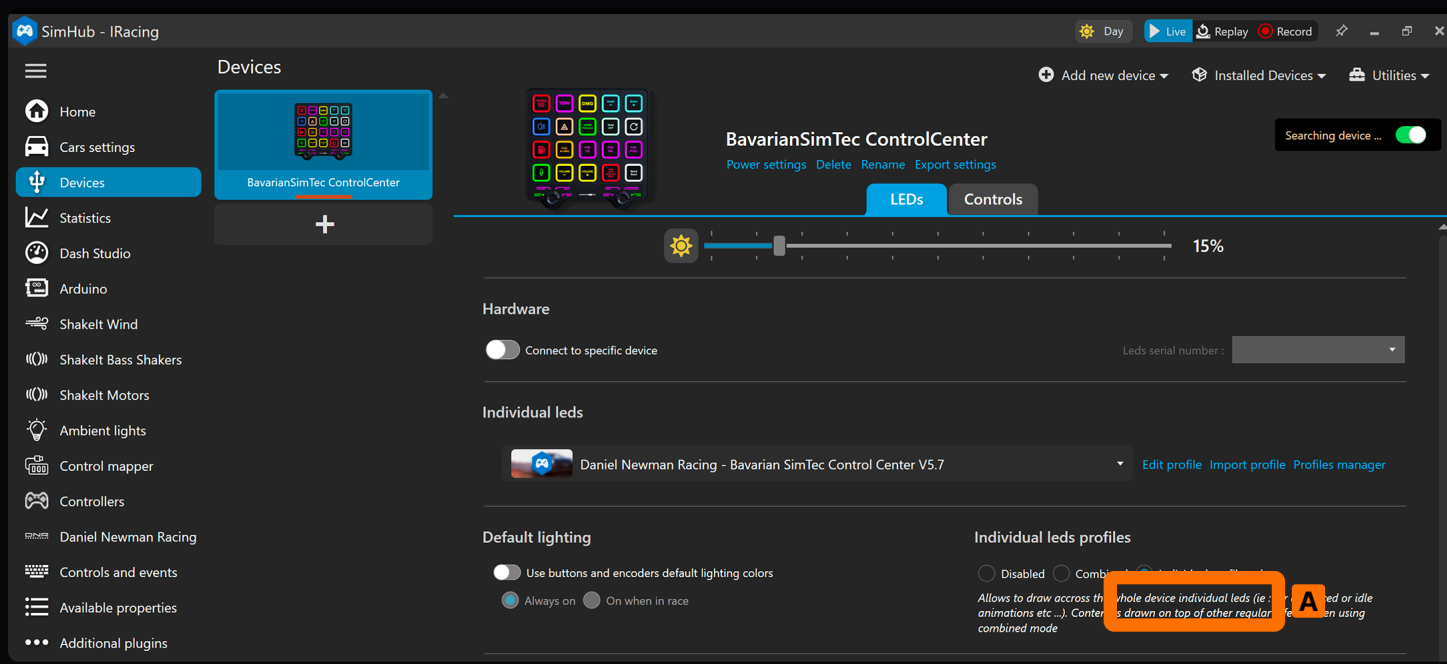




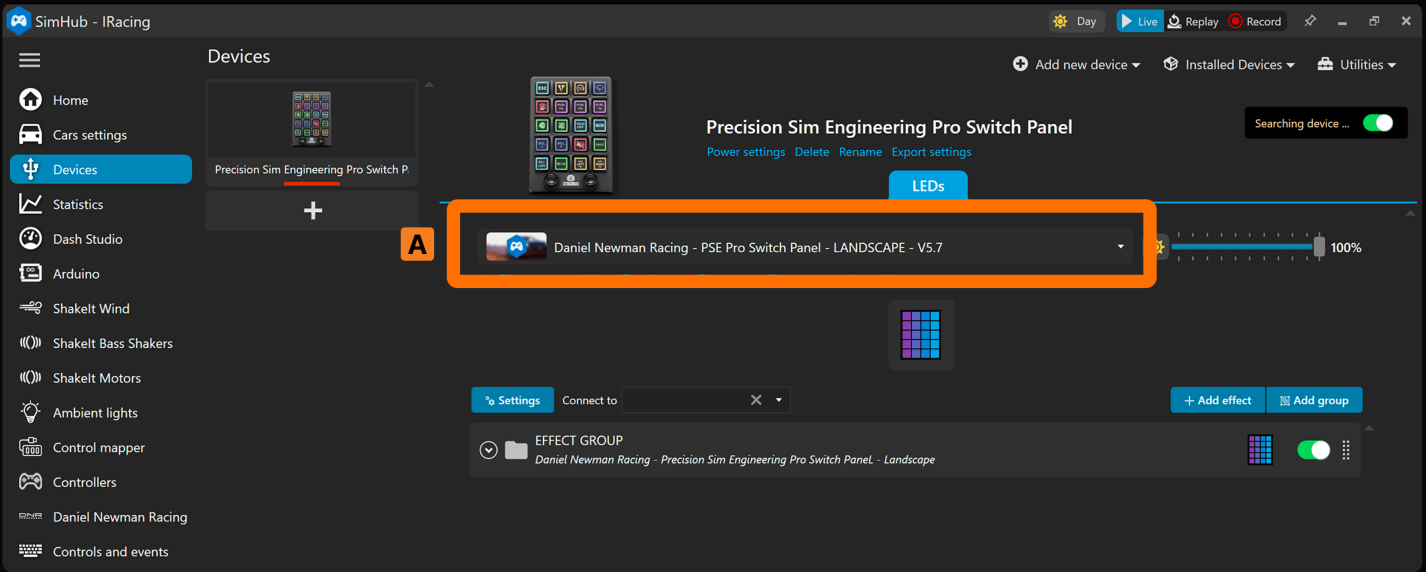
3 If your device is not listed as a SimHub compatible device, it may be an Arduino controlled device and we would recommend contacting and following the manufacturers guidelines for installation. Once the device has been added and those steps are followed, you can return to this guide for profile installation.

4 Crucially there are a number of differing configurations in the Button Box tab, and selecting the correct one is paramount to your profile installation.

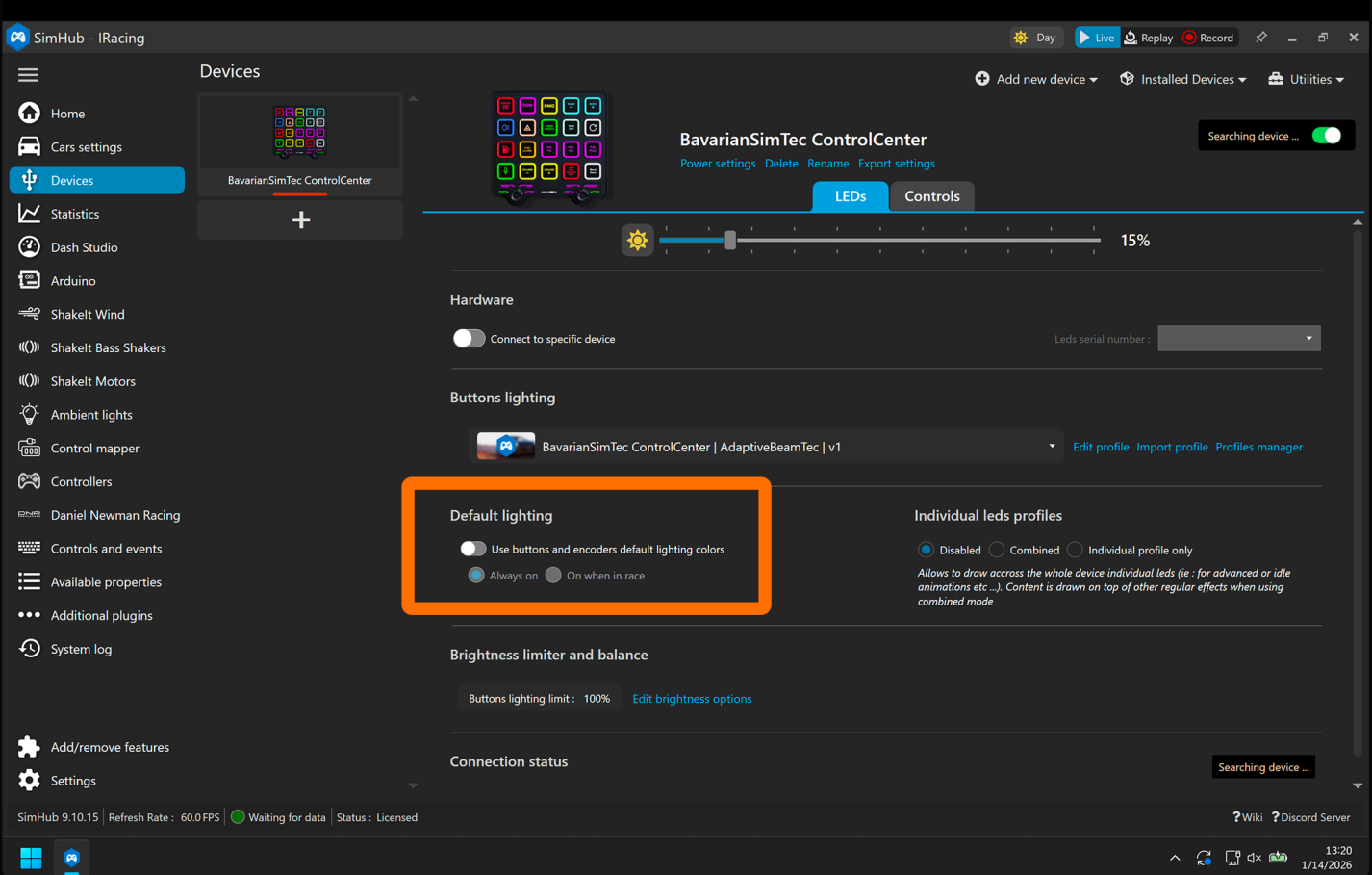
IF your Button Box has the 'Individual LEDs' option you MUST tick the box as shown in (A).



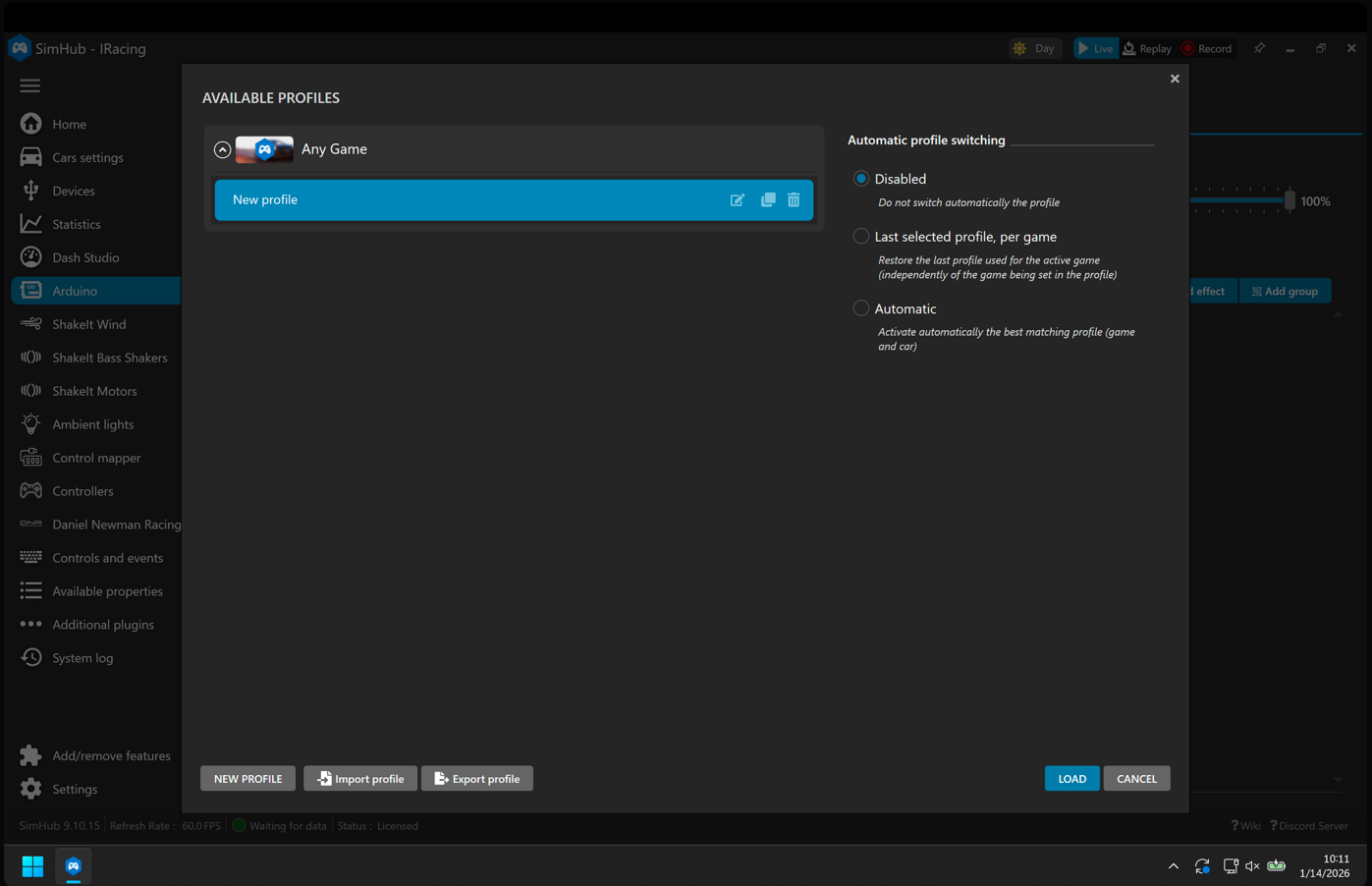
5 If you do not have a Button Box that lists the 'Individual LEDs' option you will proceed with installation of the LED profile in box (A) shown below.



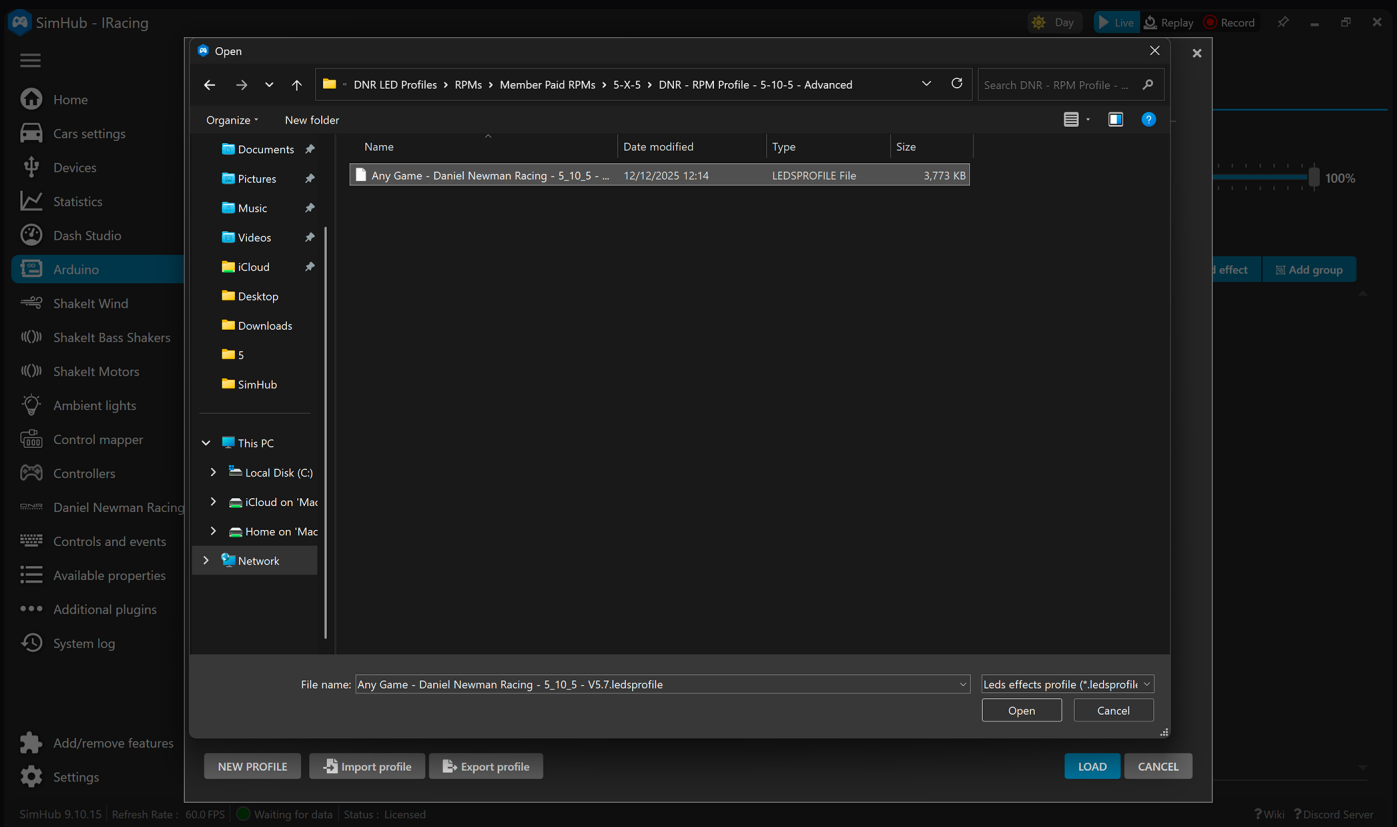
6 **IMPORTANT:** Irrespective of the type of Steering Wheel and the options presented to you above, at this stage you will now want to ensure you disable the Default lighting toggle.



7 To install the profile in either the Telemetry LEDs, Button LEDs or Individual LEDs option locate and press 'Profiles Manager'.

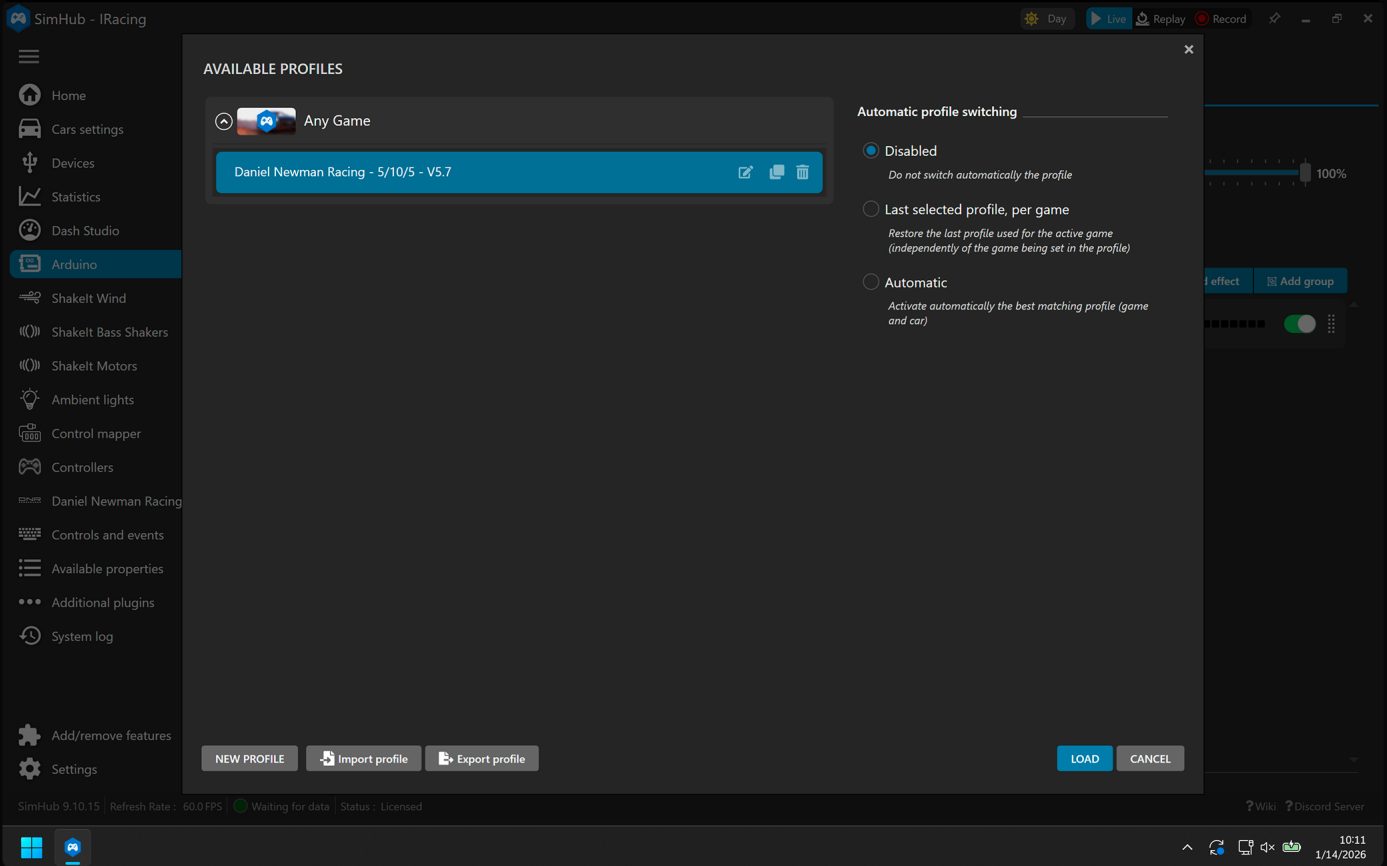


8 Navigate your Computers disk drive to locate the LED file you wish to install. Once located select it and press 'Open'.



9 The LED profile is now successfully installed. We would strongly recommend at this stage that after you have selected the DNR LED that the disabled button on the right hand side of the screen is checked (this will ensure that SimHub does not switch the profile to any others installed when the game is launched).

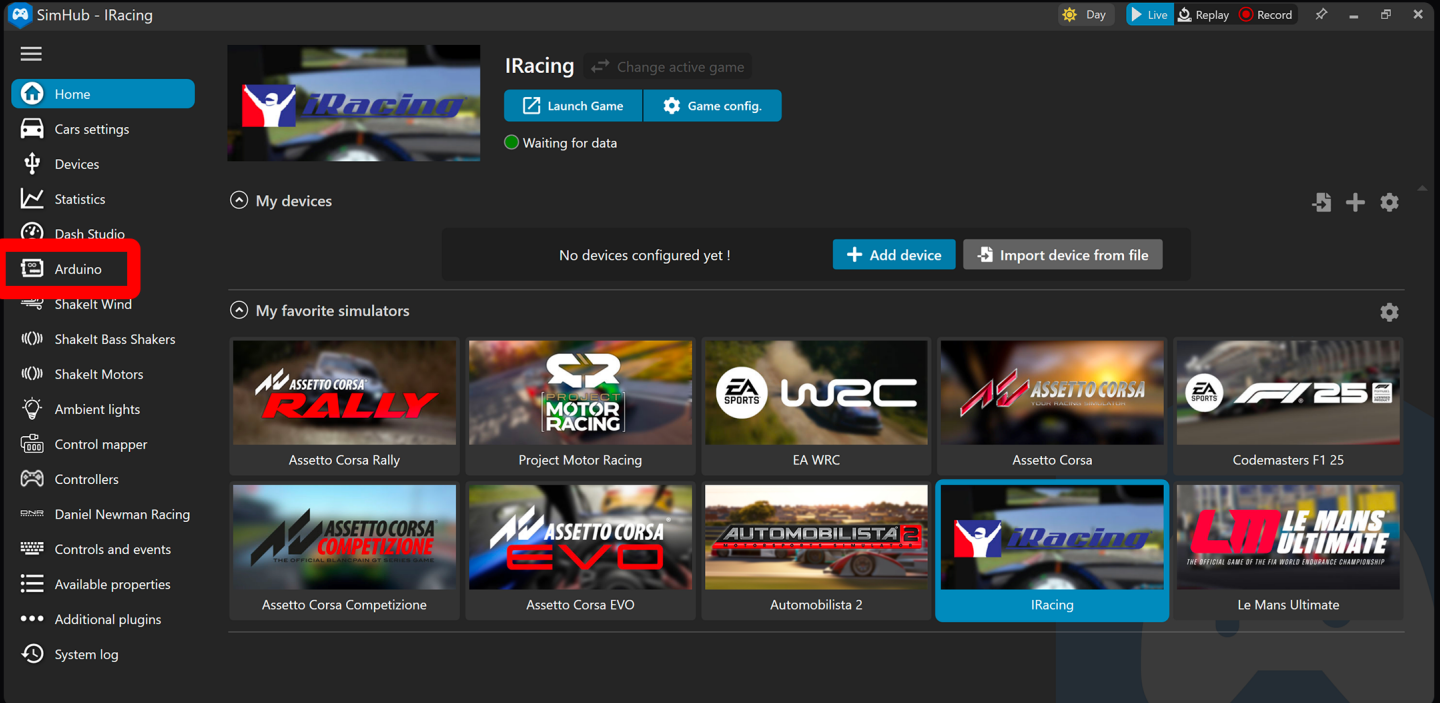
if you do not require any other of the LED profiles (or the default profile) on this list, we would also recommend deleting them to ensure accidental switching does not occur.



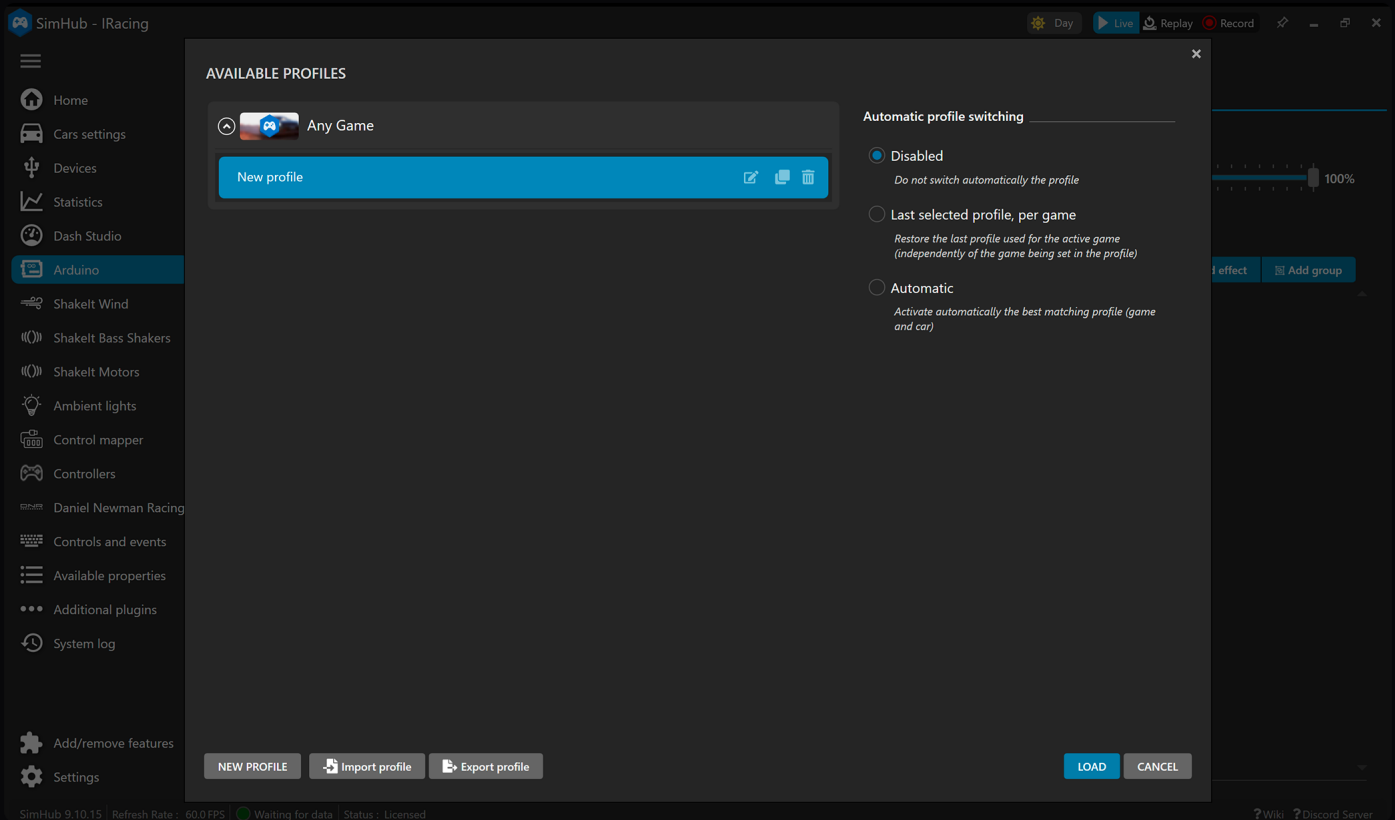
DNR Button Box LED Profile Installation - Arduino Device

- 1 If you have established that your device is an Arduino based device and it is not listed in the SimHub compatible device list, ensure that you first contact and follow your manufacturers installation instructions to add your device to SimHub.

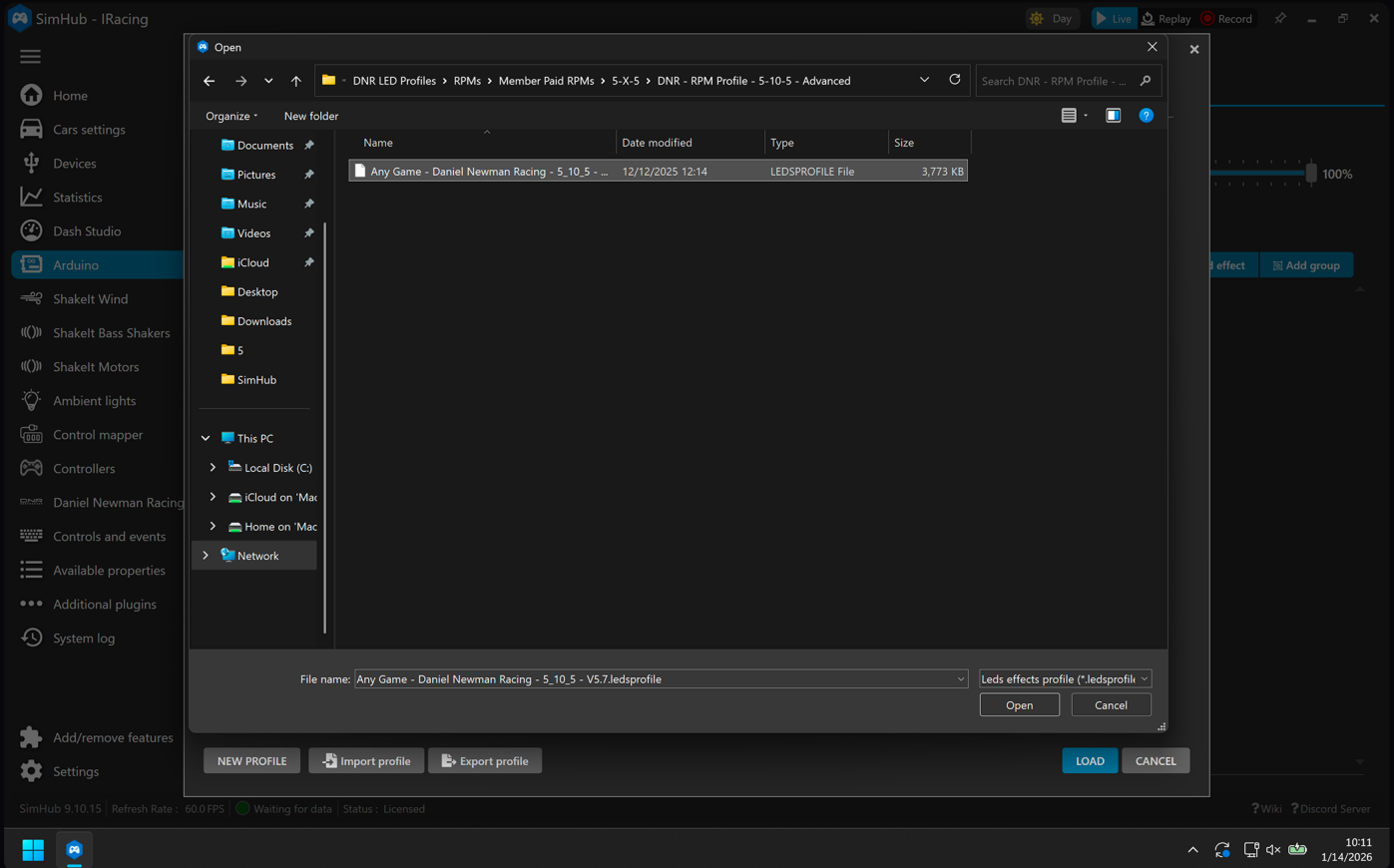
Once that step is completed, you need to open SimHub and navigate to the Arduino page.



- 2 To install the profile, navigate to the RGB LEDs tab and then locate and press 'Profiles Manager'.



3 Navigate your Computers disk drive to locate the LED file you wish to install. Once located select it and press 'Open'.



4 The LED profile is now successfully installed. We would strongly recommend at this stage that after you have selected the DNR LED that the disabled button on the right hand side of the screen is checked (this will ensure that SimHub does not switch the profile to any others installed when the game is launched).

if you do not require any other of the LED profiles (or the default profile) on this list, we would also recommend deleting them to ensure accidental switching does not occur.

